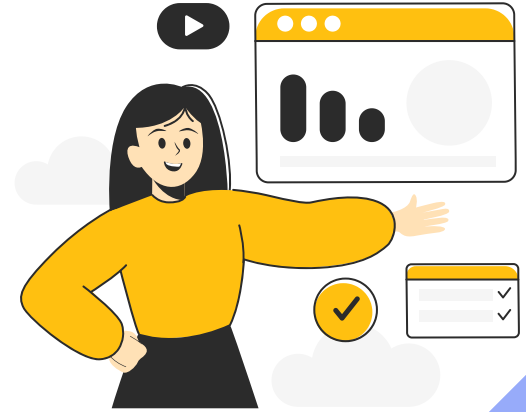


PROGRAM IMPACT

Helping Hands Consultancy Services assesses program effectiveness by measuring outcomes & impact on beneficiaries, providing insights & recommendations to optimize success and drive greater social change.

KEY ASPECTS OF PROGRAM IMPACT

- ✓ **IMPACT Assessment** – Evaluating social, economic, and environmental effects on beneficiaries.
- ✓ **Data Collection & Analysis** – Using surveys, interviews, and focus groups to measure outcomes.
 - ✓ **Theory of Change Development** – Mapping the link between activities, outcomes, and impact goals.
- ✓ **Baseline Measurement** – Establishing initial data to track progress over time.
 - ✓ **Monitoring & Reporting** – Tracking performance and providing actionable insights.
- ✓ **Capacity Building** – Strengthening organizations' internal evaluation capabilities.



HELPING HANDS CONSULTANCY SERVICES DRIVES IMPACT IN:-

- ✓ **Education** – Enhancing learning outcomes, school improvement & access.
- ✓ **Health** – Evaluating disease prevalence, healthcare access & mortality rates.
- ✓ **Economic Development** – Analyzing job creation, income growth & poverty reduction.
- ✓ **Environment** – Measuring conservation efforts, sustainability & environmental quality.



Who We Work With

Helping Hands Consultancy Services supports non-profits, government agencies, foundations, and CSR-driven corporations in assessing and enhancing program impact. We help organizations demonstrate effectiveness, evaluate policies, identify high-impact projects, and measure social impact to drive meaningful change.

